

2 0 1 2   C O L L E C T I O N



PREMIUM HELMETS

# TESTED OUT HERE

---

Touring, motocross, road racing, adventure riding, dual-sport... If it's got two wheels and a motor, we can't get enough! Like you, motorcycling occupies a huge part of our lives here at SHOEI Helmets, which is why autumn (the season this catalog was built) is among our favorite times of the year: Not only is the weather in much of North America ideal for whatever your preferred discipline of riding happens to be, it is also the season when we have the great honor of introducing SHOEI's newest line of helmets and graphics.

It's true that countless hours of engineering, R&D and testing go into each and every SHOEI helmet model well before we're able to put them to the true test on the road, track or trail, but a final stamp of approval is granted only after each helmet is put through the ringer in its true riding environment.

Our senses engulfed with the pleasures that only motorcycling can offer, we set out onto the open roads of Central California to test, film and photograph the latest and greatest from the most trusted name in motorcycle helmets. Join us on our road trip, as we present to you the 2012 SHOEI lineup.















# CONTENTS

## ROAD HELMETS

X-Twelve	6
RF-1100	12
Qwest	18
Neotec	24
Multitec	28
RJ Platinum-R	29

## OFF-ROAD HELMETS

VFX-W	32
Hornet-DS	40

## SHOEI ADVANCED TECHNOLOGY

Production/Aerodynamics/Comfort	42
CW-1 Shield/QRSA	44
Features/Helmet Fit	46
Accessories	48









# ROAD HELMETS





# X-TWELVE

The demands that a world-class racer puts on his or her equipment may be second to none, but that hasn't stopped SHOEI from producing a pure racing helmet that can also meet the needs of today's performance-driven enthusiasts. Born from racing, the X-TWELVE combines integral feedback from professional racers around the globe with SHOEI's 50 years of helmet building experience, the very latest in technology, and the most advanced materials known to man. Track certified by the fastest riders on the planet, the X-TWELVE's innovative features unite to form the most progressive racing helmet on the market.

**X-TWELVE**  
BORN FROM RACING

## 1) WIND TUNNEL TESTED

Countless hours in SHOEI's in-house wind tunnels were spent testing the X-TWELVE's shell, Aero Edge Spoiler 2, and vents, resulting in an incredibly sleek design that increases airflow while reducing noise, buffeting and lift during high-speed riding.

## 2) VENTILATION PERFORMANCE

Featuring 5 intake and 10 exhaust vents, the X-TWELVE is SHOEI's most aggressively-ventilated helmet. Wind tunnel tests have identified the optimal locations and shapes of all vent ports to maximize airflow and improve negative air pressure exhaust suction.

## 3) SIDE EXTRACTOR VENTS

Developed by SHOEI's MotoGP racing service, innovative Side Extractor Vents featured exclusively on the X-TWELVE help clear warm, humid air from the racer's face to increase comfort and reduce fogging.

## 4) CW-1 SHIELD (See page 44 for more details)

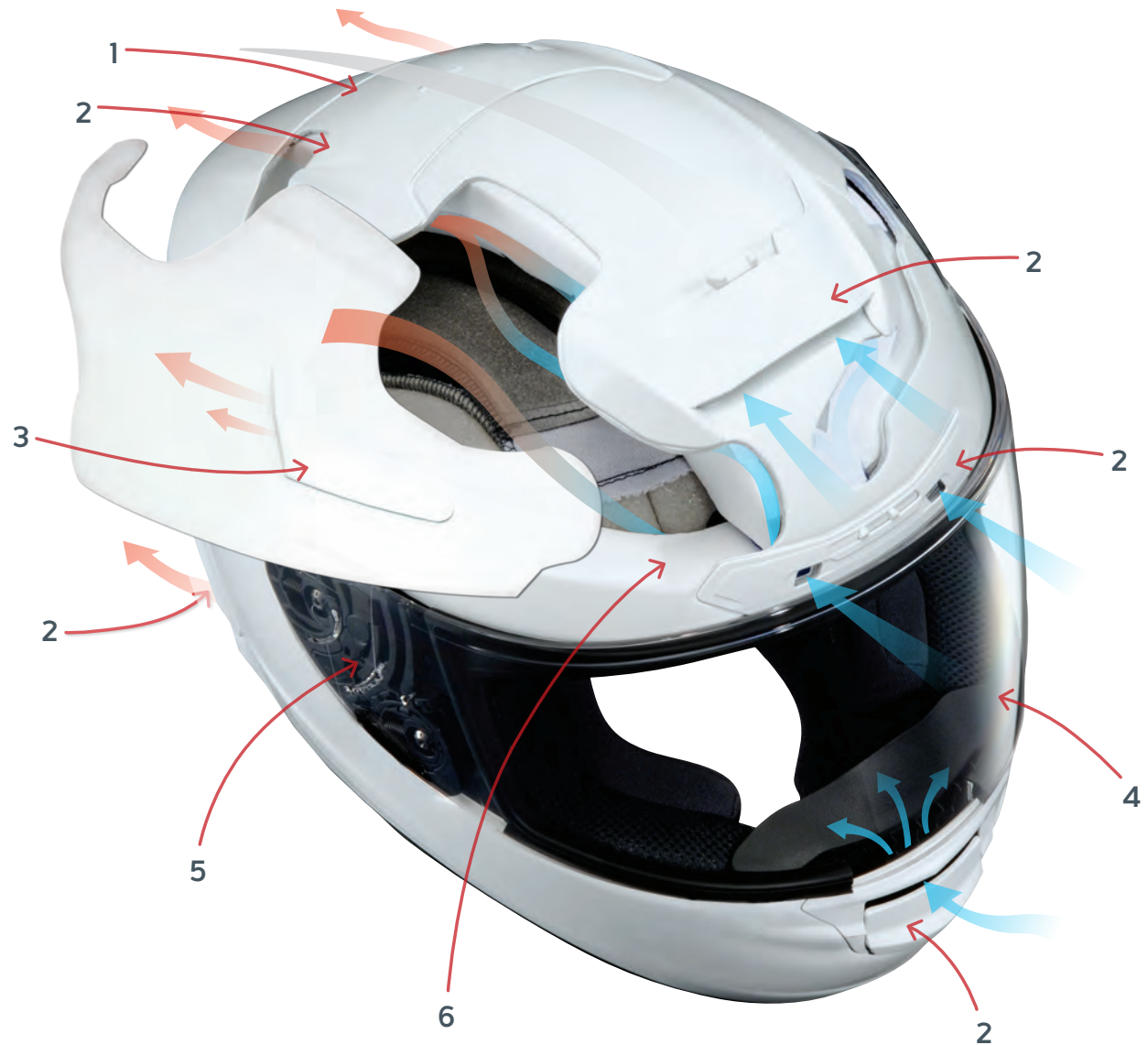
Wider and taller than the CX-IV that it replaced, the CW-1 protects from 99% of the sun's damaging UV rays, and SHOEI's 3D injection-molding process ensures a distortion-free view throughout the entire field of vision (Works in conjunction with optional Pinlock® system. Optional CWF-1 racing shield accommodates tearoffs).

## 5) QRSA BASE PLATE SYSTEM (See page 45 for more details)

The QRSA features the significant advantage of SHOEI's patent-pending spring-loaded technology. Every time the CW-1 shield is lowered, the spring-loaded mechanism pulls the shield back to contact the window beading evenly, ensuring a wind and waterproof seal.

## 6) AIM+ SHELL CONSTRUCTION

SHOEI's proprietary AIM+ technology integrates a six-ply matrix of hand-laid interwoven layers of fiberglass with organic fibers and resin, resulting in the strongest, lightest, most elastic shell we've ever produced.





**+** **EMERGENCY QUICK RELEASE SYSTEM (E.Q.R.S.)**

Shared with the VFX-W off-road helmet, the X-TWELVE features SHOEI's exclusive EQRS that allows emergency medical personnel to easily and safely remove the cheek pads from an injured rider's helmet. With the cheek pads absent, the helmet can be gently removed from an injured rider's head with minimal load being placed on his or her neck.



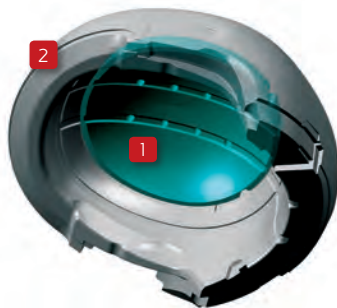
**AERO EDGE SPOILER 2**

The X-TWELVE's Aero Edge Spoiler 2 was strategically designed and positioned to reduce lift at high speeds—minimizing the aerodynamic drag coefficient of both rider and motorcycle—all the while generating negative air pressure to help draw warm air through the helmet's exhaust vents.



**3D MAX-DRY INTERIOR SYSTEM**

The 3D Max-Dry interior system is a high-performance interior that features SHOEI's proprietary Max-Dry material, proven to absorb and dissipate sweat 2X faster than nylon interiors. Pulling moisture away from the skin results in a cooler, dryer riding and racing experience. Three-dimensionally shaped to match the contours of a rider's head, the X-TWELVE's 3D Max-Dry interior supplies our most comfortable fit ever, while maintaining the firm hold necessary for distraction-free, high-speed riding and racing.



**DUAL-LAYER EPS LINER**

The X-TWELVE's Dual-Layer EPS Liner not only provides enhanced impact absorption by utilizing varying densities of foam, it is designed to allow cooling air to travel unrestricted through tunnels created in the EPS, further enhancing the X-TWELVE's unmatched ventilation characteristics.







BEN BOSTROM





NEW GRAPHIC

VERMEULEN5 TC-3



NEW COLOR

B-BOZ TC-6



B-BOZ TC-8



NEW GRAPHIC

ELIAS2 TC-3







KIYONARIZ TC-1



KIYONARIZ TC-2



KIYONARIZ TC-5



BAUTISTA TC-2



GLORY2 TC-2



LASECA TC-4



REVERB TC-2







WHITE



BLACK



BLACK METALLIC



MATTE BLACK



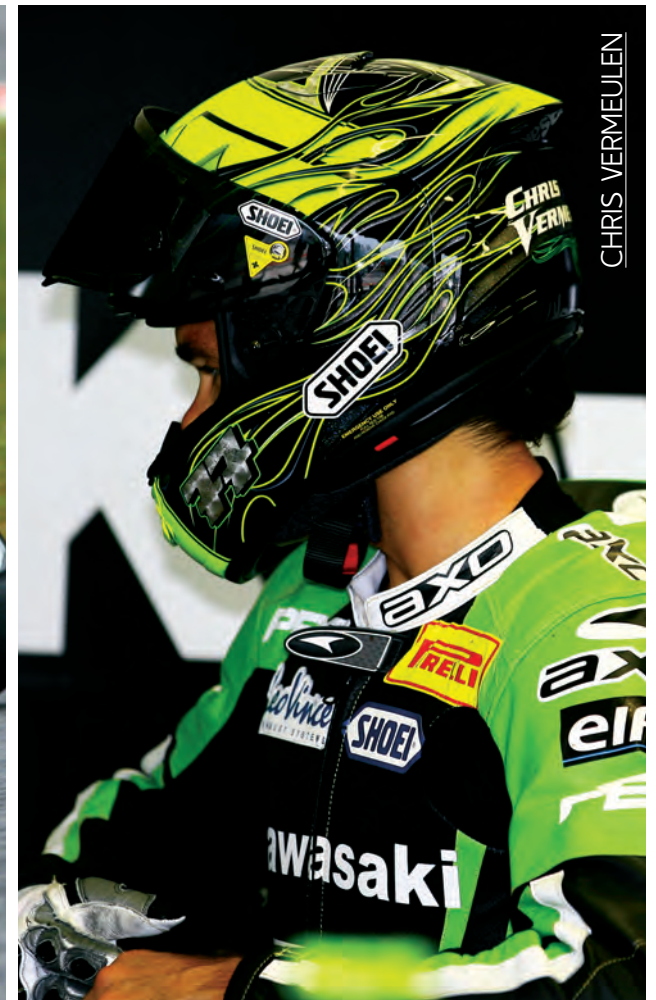
ANTHRACITE METALLIC



LIGHT SILVER



ALVARO BAUTISTA



CHRIS VERMEULEN



Creating the perfect motorcycle helmet is no easy task, but with state-of-the-art technology and everything learned over 50 years of premium helmet development in our corner, evolving SHOEI's best-selling RF model was a no-brainer. Unrivaled in every feature category, there's not another full-face helmet on the road that truly embodies motorcycling quite like the RF-1100. With several new 2012 graphics options thrown in the mix to keep things fresh, sport-touring's most well-rounded specimen remains the must-have full-face helmet for those who demand the absolute best out of their safety equipment.

# RF-1100

THE EVOLUTION OF PERFECTION

### 1) VARIABLE VENTILATION SYSTEM

The RF-1100 features a variable ventilation system that incorporates three intake and six exhaust vents in total. SHOEI's user-friendly system allows riders to select the perfect balance between airflow and silence, creating an ideal riding environment in even the most challenging conditions.

### 2) ENLARGED LOWER VENT

A larger lower vent port and more streamlined vent shutter are utilized to increase airflow into the chin bar, while reducing unwanted whistling and road noise.

### 3) SHELL-INTEGRATED SPOILER

SHOEI's exclusive, state-of-the-art shell forming technology incorporates the aerodynamic advantages of a spoiler right into the shell of the RF-1100. Maintaining a consistent shell thickness to guarantee proper strength and weight, the RF-1100's shell-integrated spoiler reduces lift and drag during high-speed riding, yielding a stable, less fatiguing ride.

### 4) CW-1 SHIELD (See page 44 for more details)

Wider and taller than the CX-IV that it replaced, the CW-1 protects from 99% of the sun's damaging UV rays, and SHOEI's 3D injection-molding process ensures a distortion-free view throughout the entire field of vision (Works in conjunction with optional Pinlock® system. Optional CWF-1 racing shield accommodates tearoffs).

### 5) QRSA BASE PLATE SYSTEM (See page 45 for more details)

The QRSA features the significant advantage of SHOEI's patent-pending spring-loaded technology. Every time the CW-1 shield is lowered, the spring-loaded mechanism pulls the shield back to contact the window beading evenly, ensuring a wind and waterproof seal.

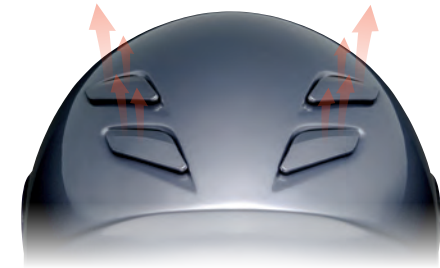






### OPTIMAL EXHAUST VENTILATION

Wind tunnel testing has revealed that the optimal location for exhaust vents is actually much higher on the rear portion of the helmet's shell than originally thought. The relocated exhaust vent ports now take better advantage of negative pressure suction, dramatically improving exhaust ventilation. In addition to improved ventilation, better aerodynamic performance has also been achieved by separating the spoiler and exhaust vents.

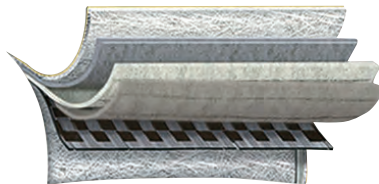
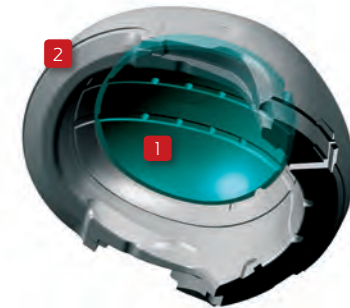


### FULLY REMOVABLE INTERIOR SYSTEM

The RF-1100 is equipped with a fully removable, washable, and replaceable interior system. The 3D center pad components are three-dimensionally shaped to match the contours of a rider's head, allowing for an extremely comfortable fit while maintaining the firm hold necessary for distraction-free, high-speed riding. The RF-1100's multi-layer cheek pads are available in six thicknesses for a customizable fit.

### DUAL-LAYER EPS LINER

The RF-1100's Dual-Layer EPS Liner not only provides enhanced impact absorption by utilizing varying densities of foam, it is designed to allow cooling air to travel unrestricted through tunnels created in the EPS, further enhancing the RF-1100's unmatched ventilation characteristics.



### AIM+ SHELL CONSTRUCTION

SHOEI's proprietary AIM+ technology integrates a six-ply matrix of hand-laid interwoven layers of fiberglass with organic fibers and resin, resulting in the strongest, lightest, most elastic shell we've ever produced.



\*Size XXXL is available in White, Black, Matte Black, Anthracite, and Light Silver





NEW GRAPHIC

CHROMA TC-1



NEW GRAPHIC

CHROMA TC-2



NEW GRAPHIC

CHROMA TC-3



NEW GRAPHIC

CHROMA TC-6



CONQUEROR TC-9



CONQUEROR TC-10



NEW GRAPHIC

HADRON2 TC-5



NEW GRAPHIC

HADRON2 TC-6









NEW GRAPHIC

CORAZON TC-2



NEW GRAPHIC

CORAZON TC-7



NEW GRAPHIC

PIOUS TC-5



NEW GRAPHIC

MERCILESS TC-5



DIABOLIC DIVINITY TC-6



SEILON TC-1



SEILON TC-2



SEILON TC-5





NEW COLOR

ENIGMA TC-2



ENIGMA TC-4



ENIGMA TC-6



WHITE



BLACK



BLACK METALLIC



MATTE BLACK



ANTHRACITE METALLIC



PEARL GREY



LIGHT SILVER



WINE RED



MONZA RED



PURE ORANGE



BRILLIANT YELLOW



No matter what we ride, where our final destination, or the path we choose to get there, every motorcyclist shares the same common thread when throwing a leg over their machine. It's the exhilarating search for adventure that draws us to the road, and SHOEI's QWEST embodies what every rider seeks to experience along the way. Revolutionary noise-reduction technology, unsurpassed long-distance comfort, advanced ventilation performance, a light-weight, balanced fit and feel, and over 50 years of helmet-building experience have combined to deliver the finest touring helmet known to man. The groundbreaking QWEST—It's your journey... Enjoy every mile of it.

# QWEST

GET OUT THERE...

### 1) WIND TUNNEL TESTED

Countless hours in SHOEI's in-house wind tunnels were spent testing the QWEST's shell aerodynamics, vents, and internal sound levels, resulting in an incredibly sleek design that increases airflow while reducing road noise, buffeting and lift during high-speed touring.

### 2) VENTILATION PERFORMANCE

Utilizing SHOEI's wind tunnels to help reveal the optimal balance between airflow and silence, SHOEI engineers equipped the QWEST with a larger lower vent shutter for easier use with riding gloves; a strategically-positioned upper vent for optimal air intake, and uniquely-positioned upper exhaust vents to take better advantage of negative pressure suction—all yielding dramatically-improved cool-air intake and hot-air expulsion.

### 3) SHELL-INTEGRATED SPOILER

SHOEI's exclusive, state-of-the-art shell forming technology incorporates the aerodynamic advantages of a spoiler right into the shell of the QWEST. Maintaining a consistent shell thickness to guarantee proper strength and weight, the QWEST's shell-integrated spoiler reduces lift and drag during high-speed riding, yielding a stable, less fatiguing ride.

### 4) CW-1 SHIELD (See page 44 for more details)

Wider and taller than the CX-IV that it replaced, the CW-1 protects from 99% of the sun's damaging UV rays, and SHOEI's 3D injection-molding process ensures a distortion-free view throughout the entire field of vision (Works in conjunction with optional Pinlock® system. Optional CWF-1 racing shield accommodates tearoffs).

### 5) QRSA BASE PLATE SYSTEM (See page 45 for more details)

The QRSA features the significant advantage of SHOEI's patent-pending spring-loaded technology. Every time the CW-1 shield is lowered, the spring-loaded mechanism pulls the shield back to contact the window beading evenly, ensuring a wind and waterproof seal.

### 6) AIM+ SHELL CONSTRUCTION

SHOEI's proprietary AIM+ technology integrates a six-ply matrix of hand-laid interwoven layers of fiberglass with organic fibers and resin, resulting in the strongest, lightest, most elastic shell we've ever produced.







### NOISE-REDUCTION TECHNOLOGY

Thanks to priceless research done in SHOEI's in-house wind tunnels, the QWEST boasts a reduction of wind noise (without blocking the road's "informative sounds") thanks to optimal shell aerodynamics and liner components designed to prevent unwanted road noises from entering through the bottom of the helmet. The result: A maximum 2.2 dB\* reduction in sound.

\*Noise levels vary based on motorcycle type, riding position, environmental sounds, etc.

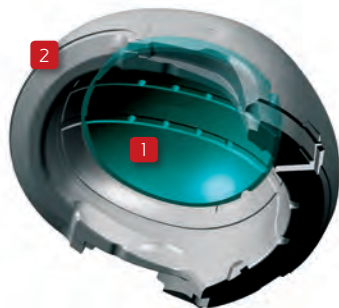


### LARGER LOWER VENT SHUTTER

The QWEST is equipped with a larger lower vent shutter for easier use with riding gloves. The larger lower vent port and more streamlined shutter have been utilized to increase airflow while reducing unwanted whistling and road noise.

### INTERIOR COMFORT SYSTEM

The QWEST is equipped with a 3D center pad, fully removable, washable, and replaceable multi-layer cheek pads, and removable chinstrap covers. The 3D center pad components are three-dimensionally shaped to match the contours of a rider's head, allowing for an extremely comfortable fit while maintaining the firm hold necessary for distraction-free, high-speed riding. The QWEST's multi-layer cheek pads are available in six thicknesses for a customizable fit.



### DUAL-LAYER EPS LINER

The QWEST's Dual-Layer EPS Liner not only provides enhanced impact absorption by utilizing varying densities of foam, it is designed to allow cooling air to travel unrestricted through tunnels created in the EPS, further enhancing the QWEST's unmatched ventilation characteristics.











NEW GRAPHIC

DIVERGE TC-1



NEW GRAPHIC

DIVERGE TC-2



NEW GRAPHIC

DIVERGE TC-5



NEW GRAPHIC

DIVERGE TC-6



NEW GRAPHIC

OVERT TC-3



NEW GRAPHIC

PASSAGE TC-1







NEURON TC-5



NEURON TC-6



GODDESS TC-7



GODDESS TC-2



GODDESS TC-6



AIRFOIL TC-1



AIRFOIL TC-2



AIRFOIL TC-5



AIRFOIL TC-10





ETHEREAL TC-1



ETHEREAL TC-2



ETHEREAL TC-5



WHITE



BLACK



MATTE BLACK



ANTHRACITE METALLIC



MATTE DEEP GREY



LIGHT SILVER





With the popularity of sport and adventure touring at an all-time high, the advancement of the incredibly versatile modular helmet segment was a must for SHOEI engineers. Though still a respected part of our 2012 helmet lineup, the Multitec's modular design was used as a backbone, analyzed with scrupulous eyes, and tweaked ever so slightly to yield the most progressive flip-up helmet on the market today—the all-new Neotec. Boasting improved shell aerodynamics, a wider and taller field of vision, a reduction in wind noise, an internal sun shield, and a fully removable, washable and replaceable liner system, the Neotec is the next level of modular helmet design for today's hybrid motorcyclists.

**NEOTEC**  
EXPERIENCE THE VERSATILITY

### 1) NOISE-REDUCTION DESIGN

Thanks to time well spent in SHOEI's wind tunnels, Neotec owners will enjoy a reduction of wind noise without blocking the road's "informative sounds." In addition to optimal shell aerodynamics and liner components designed to prevent unwanted road noises from entering through the bottom of the helmet, a dual-ridge window bead and the chin bar's "Vortex Generator" lip work together to reduce noise and manage airflow around the helmet.

### 2) VENTILATION PERFORMANCE

Utilizing SHOEI's wind tunnels to help reveal the optimal balance between airflow and silence, SHOEI engineers equipped the all-new Neotec with a large lower vent shutter for ease of use with riding gloves, a strategically-placed, three position upper vent for optimal air intake, and uniquely-positioned upper exhaust outlet vents to take better advantage of negative pressure suction—all yielding dramatically-improved cool-air intake and hot-air expulsion.

### 3) SHELL-INTEGRATED SPOILER

SHOEI's exclusive, state-of-the-art shell forming technology incorporates the aerodynamic advantages of a spoiler right into the shell of the new Neotec. Maintaining a consistent shell thickness to guarantee proper strength and weight, the Neotec's shell-integrated spoiler reduces lift and drag during high-speed riding, yielding a stable, less fatiguing ride.

### 4) CNS-1 SHIELD & QR-N BASE PLATE

Wider and taller than the CX-IV that it replaces, the CNS-1 protects from 99% of the sun's damaging UV rays, and SHOEI's 3D injection-molding process ensures a distortion-free view throughout the entire field of vision. Coupled with the Neotec-exclusive QR-N base plate system, shield changes and base plate function have never been smoother.

### 5) PINLOCK® ANTI-FOG SYSTEM

The all-new Neotec comes equipped with a Pinlock® Fog-Resistant System, offering the most effective anti-fog protection in existence. A simple, one-step installation process makes every Pinlock® lens easy to install.

### 6) 360° PIVOT LOCKING SYSTEM

SHOEI's proven "360° Pivot Locking System" is road tested and made of high quality stainless steel components to ensure a safe and secure closure when the Neotec's chin bar is in the down, locked position.







### FLIP-UP CHIN BAR & FACE SHIELD

The Neotec's flip up design offers the convenience and versatility of a full-face helmet that converts instantly into an open-face configuration. Utilizing an enlarged lock release button to facilitate easy handling with gloves on, the Neotec's lightweight chin bar and face shield rotate with smooth precision on a single axis point, yielding the seamless versatility of a true two-in-one design.



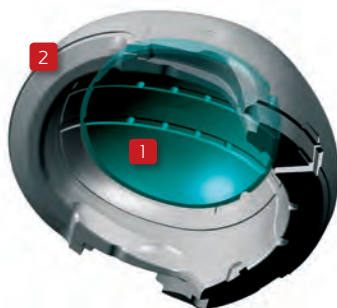
### INTERNAL SUN SHIELD

The Neotec's built-in QSV-1 sun shield gives riders instant relief from sun glare in one quick motion. A large, easily located switch activates the 3D injection-molded inner shield, and the distortion-free view blocks 99% of the sun's damaging UV rays just like the CNS-1 external shield that lies ahead. Unique to the Neotec, the forehead area of the outer shell is raised slightly to accommodate the internal sun shield, allowing for the integrity of the helmet's inner EPS liner to remain intact.



### FULLY REMOVABLE INTERIOR SYSTEM

The Neotec is equipped with a fully removable, washable, and replaceable interior system. The 3D center pad components are three-dimensionally shaped to match the contours of a rider's head, allowing for an extremely comfortable fit while maintaining the firm hold necessary for distraction-free, high-speed riding. The Neotec's multi-layer cheek pads are available in different thicknesses for a customizable fit.



### DUAL-LAYER EPS LINER

The Neotec's Dual-Layer EPS Liner not only provides enhanced impact absorption by utilizing varying densities of foam, it is designed to allow cooling air to travel unrestricted through tunnels created in the EPS, further enhancing the Neotec's unmatched ventilation characteristics.











ANTHRACITE METALLIC



WHITE



BLACK



MATTE BLACK



LIGHT SILVER



WINE RED



BRILLIANT YELLOW



Looking for convenience, versatility, and security all in one? Welcome to the functional world of the SHOEI Multitec. Recognized for the convenience and versatility provided by its ability to convert instantly to an open-face configuration, the Multitec's modular design allows riders to perform tasks that would normally require the removal of a full-face helmet. Its streamlined and aerodynamic shape, impressively quiet riding traits, excellent ventilation, and luxurious fit provide riders with unparalleled performance and comfort, all with the versatility of a true two-in-one helmet.



**FEATURES**

- > AIM Shell Construction
- > Shell-Integrated Spoiler
- > Dual-Layer EPS Liner
- > Face Shield Defogging Vent
- > CX-IV Shield
- > Q.R.B.P. (Quick-Release Base Plate) System
- > Shield Preset Lever with Locking Mechanism
- > 3D Comfort Liner System
- > Removable/Replaceable Multi-layer Cheek Pads and Chinstrap Covers
- > Cheek Pad Channels for Eyeglasses
- > Integrated Breath Guard
- > Chin Curtain
- > Complies with FMVSS218 (DOT)



WHITE



BLACK



MATTE BLACK



ANTHRACITE METALLIC



PEARL GREY



LIGHT SILVER



CRYSTAL WHITE



ROYAL BLUE



WINE RED



BRILLIANT YELLOW

**2** SHELL SIZES | DOT APPROVED  
XXS-XXL





Not your parent's old lid, the RJ Platinum-R establishes a higher standard for what an open-face helmet should be. Contemporary styling along with an improved and adjustable fit, a fully removable and washable interior, enhanced ventilation performance, and a remarkably quiet riding experience endow the RJ Platinum-R with an elevated level of excellence. Combined with SHOEI's heritage of fine craftsmanship and benchmark safety technology, you're left with the world's premier open-face helmet—the RJ Platinum-R.

**FEATURES**

- > AIM+ Shell Construction
- > Shell-Integrated Spoiler
- > Dual-Layer EPS Liner
- > Removable GT Visor
- > Snaps for Aftermarket Shields
- > 3D Comfort Liner System
- > Fully Removable/Replaceable Interior
- > Cheek Pad Channels for Eyeglasses
- > Complies with FMVSS218 (DOT) and Snell M2010



WHITE



BLACK



MATTE BLACK



ANTHRACITE METALLIC



PEARL GREY



MATTE DEEP GREY



LIGHT SILVER



CRYSTAL WHITE



WINE RED



\*Size XXXL is available in White, Black, Matte Black, and Light Silver





# OFF-ROAD HELMETS







With so many helmet options available to the motocross and off-road riding and racing communities, SHOEI takes great pride in the fact that more top riders prefer the groundbreaking VFX-W over all others. The absolute pinnacle of off-road helmets, the VFX-W is the result of countless hours of conceptualization, R&D, and testing with the most hard-nosed critics of all, our professional racing team. With top pros like Kevin Windham, Josh Grant, Josh Strang, and Destry Abbott leading the charge, the VFX-W is drenched in state-of-the-art features, and absolutely no stone was left unturned during its development. If you're looking for a new lid to hit the track or trail, look no further.

**VFX-W**  
THE WORLD'S MOST EVOLVED MOTOCROSS HELMET

**1. VENTILATION PERFORMANCE**

Wind tunnel tests have identified the optimal locations and shapes of the VFX-W's vent ports to maximize airflow and improve negative air pressure exhaust suction—all yielding dramatically-improved cool-air intake and hot-air expulsion.

**2. SLEEK MOUTHPIECE**

Wind-tunnel-refined to pull cooling air in through the chin bar of the VFX-W, the Sleek Mouthpiece is reinforced by an aluminum mesh screen and a removable, washable foam filter to prevent roost, rocks, mud, and dust from intruding.

**3. EPS LINER THROUGHOUT CHIN BAR**

The VFX-W features SHOEI's high-quality EPS liner material throughout the entire chin bar of the helmet for enhanced impact absorption.

**4. V-430 SLEEK VISOR**

Fine-tuned by SHOEI's professional motocross and off-road racing team, the V-430 "Sleek" Visor provides superior roost protection, all the while channeling cooling air into the Dual-Layer EPS liner for superior ventilation.

**5. LARGE EYEPORT**

With a greater peripheral field of vision and the ability to utilize oversized goggles desired by many of our team riders, SHOEI developed a larger eyeport into the shell of the VFX-W.

**6. SHELL INTEGRATED AERODYNAMICS**

Exclusive, state-of-the-art shell forming technology created during the development of the VFX-W allows SHOEI to incorporate the aerodynamic advantages of a spoiler right into the shell of the helmet. Maintaining a consistent shell thickness to guarantee proper strength and weight, the VFX-W's shell-integrated spoilers have also been optimized to form a perfect goggle retention system.







### EMERGENCY QUICK RELEASE SYSTEM (E.Q.R.S.)

Shared with the X-TWELVE road-racing helmet, the VFX-W features SHOEI's exclusive EQRS that allows emergency medical personnel to easily and safely remove the cheek pads from an injured rider's helmet. With the cheek pads absent, the helmet can be gently removed from an injured rider's head with minimal load being placed on his or her neck.

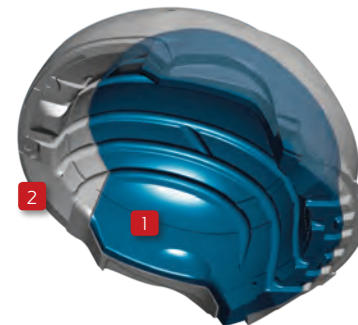


### 3D MAX-DRY INTERIOR SYSTEM

The 3D Max-Dry interior system is a high-performance interior that features SHOEI's proprietary Max-Dry material, proven to absorb and dissipate sweat 2X faster than nylon interiors. Pulling moisture away from the skin results in a cooler, dryer riding and racing experience. Three-dimensionally shaped to match the contours of a rider's head, the VFX-W's 3D Max-Dry interior supplies our most comfortable fit ever, while maintaining the firm hold necessary for distraction-free, high-speed riding and racing.

### DUAL-LAYER EPS LINER

The VFX-W's Dual-Layer EPS Liner not only provides enhanced impact absorption by utilizing varying densities of foam, it is designed to allow cooling air to travel unrestricted through tunnels created in the EPS, further enhancing the VFX-W's unmatched ventilation characteristics.



### AIM+ SHELL CONSTRUCTION

SHOEI's proprietary AIM+ technology integrates a six-ply matrix of hand-laid interwoven layers of fiberglass with organic fibers and resin, resulting in the strongest, lightest, most elastic shell we've ever produced.





KEVIN WINDHAM





K-DUB2 TC-1



K-DUB2 TC-2



K-DUB2 TC-6





JOSH GRANT





GRANT TC-5



GRANT TC-1



GRANT TC-2



NEW GRAPHIC



DISSENT TC-1

NEW GRAPHIC



DISSENT TC-2

NEW GRAPHIC



DISSENT TC-6

NEW GRAPHIC



DISSENT TC-7





NEW GRAPHIC



SALUTE TC-2



WHITE



BLACK



MATTE BLACK



## HORNET-DS

Have you ever been cruising down the highway on your street bike when out of nowhere you spot some off-road terrain that looks absolutely irresistible? We have, which is precisely why we created the Hornet-DS. Bridging all gaps between road and off-road riding, the Hornet-DS boasts an outstanding list of features that includes AIM+ shell construction, SHOEI's exclusive 3D Max-Dry Liner, and a wind-tight flip-up shield that offers the versatility of using goggles in dusty conditions. The only helmet for serious dual-sport riders, the Hornet-DS comes complete with everything but a set of knobbies.

### FEATURES

- > AIM+ Shell Construction
- > Dual-Layer EPS Liner
- > V-410 "Shorty" Visor
- > Rigid Three-Point Visor Mounting System
- > Shield Defogger Ventilation System
- > Ventilation Mouthpiece with Filter
- > Cross Vortex Rear Exhaust Vents
- > Neck Outlet Vent
- > 3D Max-Dry Liner System
- > Fully Removable/Replaceable Interior
- > Chin Curtain
- > Complies with FMVSS218 (DOT) and Snell M2010



CRYSTAL WHITE



BLACK



MATTE BLACK



MATTE DEEP GREY



LIGHT SILVER







## SHOEI ADVANCED TECHNOLOGY

The name SHOEI has long been synonymous with “premium” in the motorcycle helmet market—a credential that hundreds of loyal men and women in our Japanese factories wear with great pride. The evolution and production of our world-class helmet line is a meticulous process that combines the very latest in technology with consumer feedback, modern testing practices, advanced materials, and over 50 years of helmet building experience. Just like the very first SHOEI helmet built by our founder back in 1959, every SHOEI today is still handmade in Japan utilizing a sophisticated process that involves over 50 people for each and every helmet.

**SHOEI'S SHELL MOLDING TECHNOLOGY** features AIM (Advanced Integrated Matrix) and AIM+ shell construction processes that integrate a matrix of hand-laid interwoven layers of fiberglass with organic fibers and resin. Together, these materials combine to maximize strength and elasticity in a strong yet lightweight shell, and each is personally marked by the technician responsible for it, further endorsing the quality of every helmet.



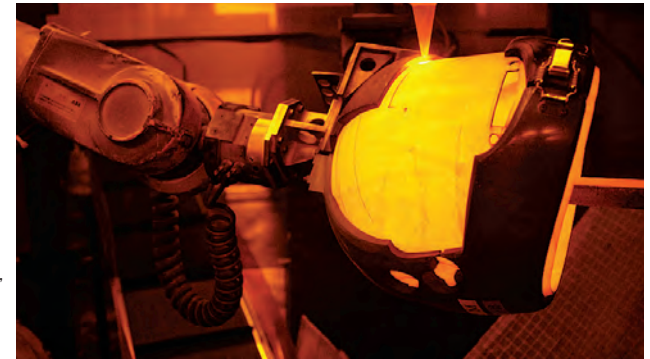
### PRODUCTION & QUALITY ASSURANCE

For all the energy and passion invested into the design and development of a product, the same level of care and due diligence must be achieved during the production process. A number of unique, state-of-the-art processes combine to yield the unrivaled quality that only SHOEI helmets are known for, and each helmet must pass several rigorous inspections throughout production before being awarded with the famous SHOEI hexagon.



### LASER CUTTING

gives each helmet its final shape; protrusions created during the manufacturing process are cut off, and openings for the eye ports and ventilation systems are cut into the shell with robotically controlled lasers. Once this process is complete, all helmets are thoroughly inspected to ensure proper material thickness and weight.



### PAINTING AND GRAPHIC APPLICATION

procedures are second to none. Combining handwork with state-of-the-art automation processes to ensure optimal quality, each helmet boasts a hand-painted finish and hand-applied decals before being sealed and protected with several quality layers of clearcoat. Each and every SHOEI helmet receives up to five layers of paint before final assembly.



### FINAL ASSEMBLY OF EACH HELMET

is done with care and precision, including the installation of ventilation sliders, shield seals, impact absorbing EPS liners, and comfort interiors. Each helmet passes a detailed final inspection before being passed on to the consumer. This strict compliance with the production processes and associated quality control standards guarantee the consistently high quality of a SHOEI helmet.





## AERODYNAMICS & VENTILATION

Motorcyclists live in a stream of moving air, making SHOEI's in-house wind tunnels an integral tool during the design and development process. In addition to shell aerodynamics, the aerodynamic efficiency of spoilers and vents are also analyzed during SHOEI's extensive wind tunnel testing practices. The result: every SHOEI helmet boasts an incredibly sleek design that increases airflow, reduces noise, buffeting and lift, and ultimately enhances the overall comfort and performance of your ride.

An integral part of the development process, SHOEI's ventilation systems direct cooling air in through the front of the helmet, and utilize key areas of low air pressure to the rear of the helmet to draw warm, damp air through its exhaust outlets. Along with the perfect shape and placement of vent intakes and outlets, the air channels in SHOEI's unique Dual-Layer EPS Liner systems are a significant contributor to our helmets' world-class ventilation characteristics.



## FIT & COMFORT

SHOEI knows that one size does not fit all, which is why we offer an industry-leading number of shell sizes, as well as various liner sizes and cheek pad thicknesses to ensure a customizable fit for each and every rider. Along with extensive research on head shapes and sizes, SHOEI incorporates a mix of exclusive comfort and performance features into the construction of every helmet. Ground-breaking components like our 3D Max-Dry Interior System (found in the X-TWELVE, VFX-W, and Hornet-DS models), 3D-shaped center pads to match the contours of a rider's head, fully removable, washable and replaceable liner systems, multi-layer cheek pads, eyeglass channels, and integrated neck pads accentuate the impeccable comfort packages exclusive only to SHOEI helmets.



## BORN FROM RACING

SHOEI prides itself in building the very best helmets that our state-of-the-art manufacturing technologies will allow, but we also maintain the core belief that good old fashioned field research yields the highest performing, most functional helmets producible. SHOEI helmets are the result of countless hours of conceptualization and R&D, but equally as important is the time spent testing with the most hardcore critics of them all—our professional racing team. From our MotoGP race team service to world-class racers like Marc Marquez, Ben Bostrom, Toni Elias, Alvaro Bautista, Kevin Windham, Josh Grant, and Josh Strang, our helmets are put through the ringer, resulting in the fine-tuned masterpieces that await you in this 2012 catalog.



## CW-1 SHIELD

Equipped on SHOEI's flagship full-face road helmet models [X-TWELVE, RF-1100, and QWEST], the innovative CW-1 shield is both wider and taller than the CX-IV that it replaces. In addition, the CW-1 shield protects SHOEI riders from 99% of the sun's damaging UV rays, and our three-dimensional injection-molding process ensures a distortion-free view throughout the entire field of vision. Another advantage of the CW-1 shield is its ability to work in conjunction with SHOEI's optional Pinlock® system to deliver fog-free vision in even the most challenging conditions. The new CW-1 Pinlock® lens is larger than those of the past, and offers fog-free viewing to the very top of our helmets' large eye ports.



*Distortion-Free*



*Noise Reduction*



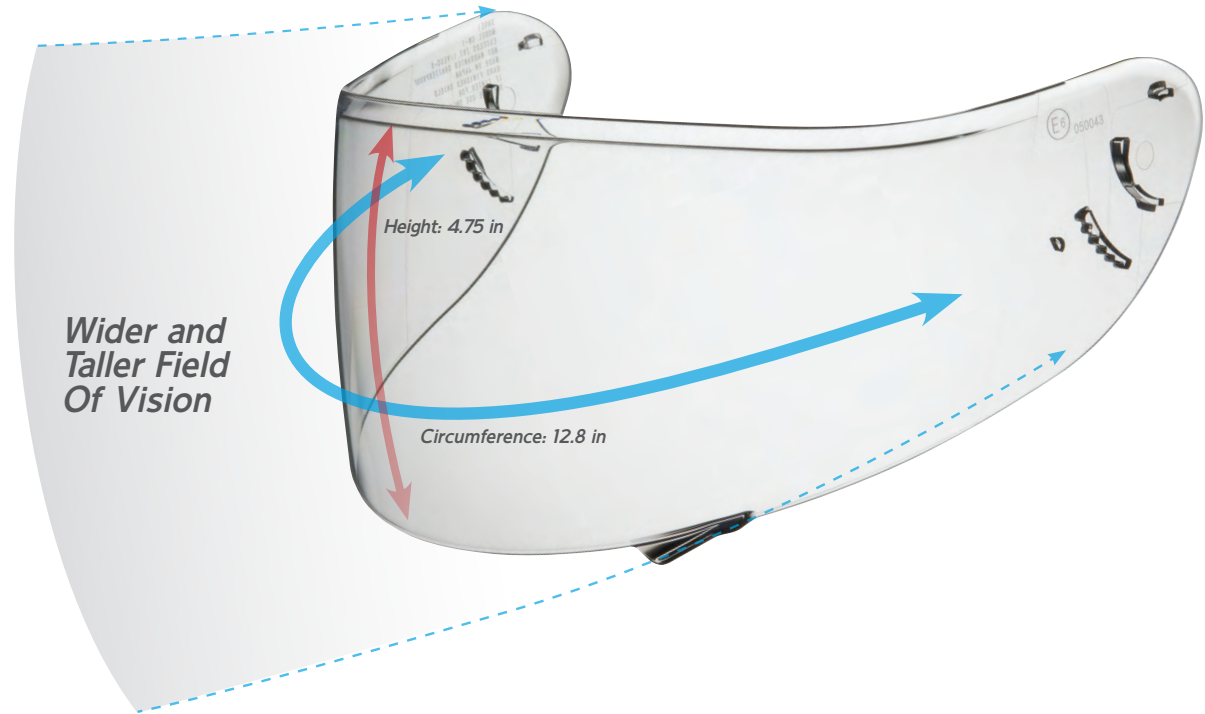
*Blocks 99% Of The Sun's Damaging UV rays.*



*Optional CW-1 Pinlock® Shield With Pinlock® Insert*



*Optional CWF-1 Pinlock® Shield With Pinlock® Insert*



## CWF-1 RACING SHIELD

Designed with ease of use in mind, SHOEI's CWF-1 racing shields provide a flat surface to accommodate racing tearoffs. With our patent-pending spring-loaded QRSA base plate system, the shield now automatically adjusts itself to make a perfect seal with the beading, making it much easier for riders to change between flat CWF-1 racing shields and the more optically correct, three-dimensionally curved CW-1 shields. Additionally, newly designed tearoff buttons allow for tearoff tension to be adjusted without tools, making it much easier and quicker to install racing tearoffs.



Self-Adjusting



Wind/Waterproof Seal

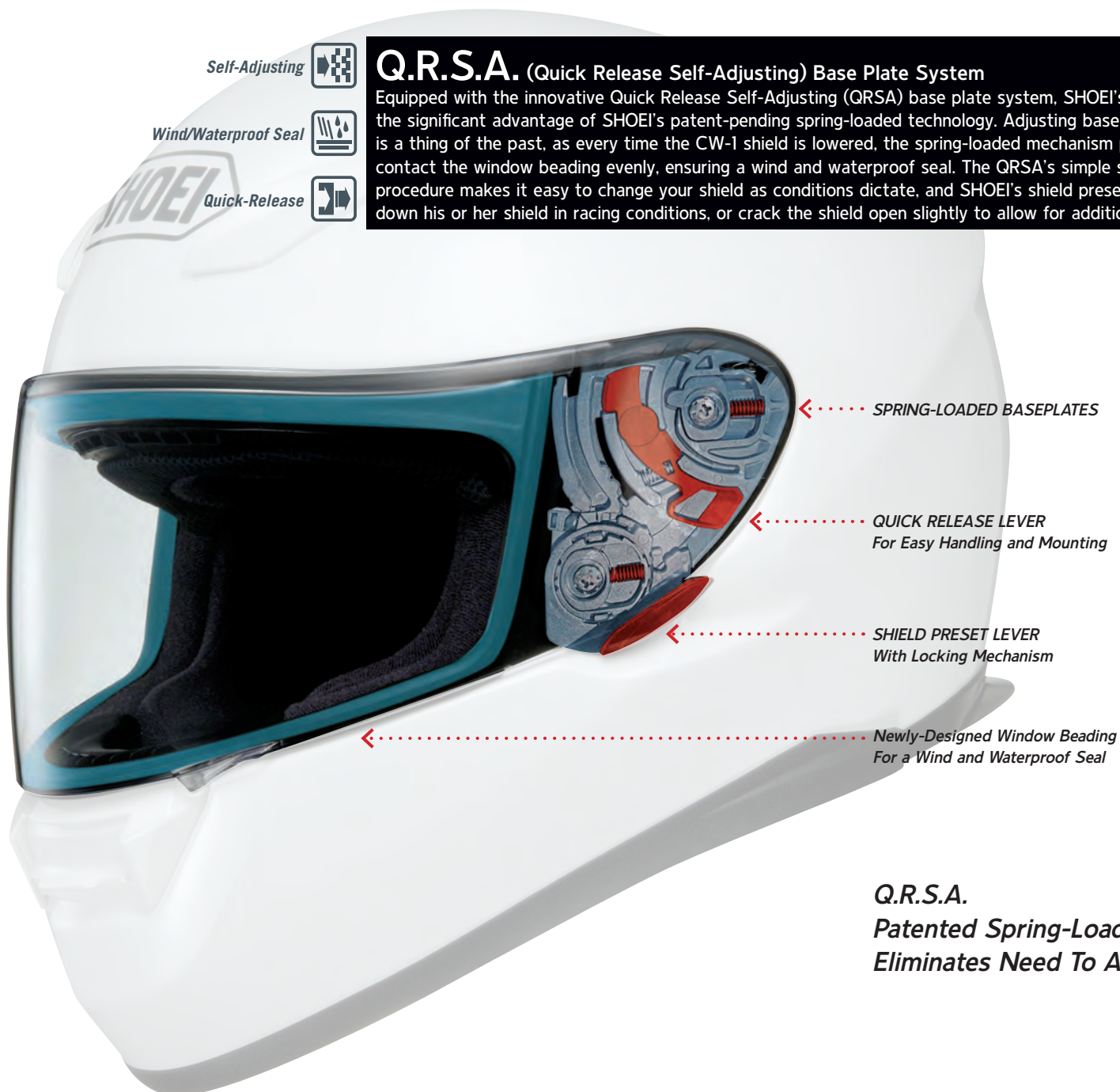


Quick-Release



## Q.R.S.A. (Quick Release Self-Adjusting) Base Plate System

Equipped with the innovative Quick Release Self-Adjusting (QRS.A) base plate system, SHOEI's full-face helmets feature the significant advantage of SHOEI's patent-pending spring-loaded technology. Adjusting base plates for proper sealing is a thing of the past, as every time the CW-1 shield is lowered, the spring-loaded mechanism pulls the shield back to contact the window beading evenly, ensuring a wind and waterproof seal. The QRS.A's simple shield release and attachment procedure makes it easy to change your shield as conditions dictate, and SHOEI's shield preset lever allows a rider to lock down his or her shield in racing conditions, or crack the shield open slightly to allow for additional airflow while on the road.



←..... SPRING-LOADED BASEPLATES

←..... QUICK RELEASE LEVER  
For Easy Handling and Mounting

←..... SHIELD PRESET LEVER  
With Locking Mechanism

←..... Newly-Designed Window Beading  
For a Wind and Waterproof Seal

**Q.R.S.A.**  
*Patented Spring-Loaded Technology  
Eliminates Need To Adjust Base Plates*

# SHOEI ADVANCED TECHNOLOGY

## 1) LOWER AIR INTAKE

Located on the chin bar, lower air intakes help ensure the circulation of air throughout the entire helmet, while drastically reducing shield fogging.

## 2) FACE SHIELD DEFOGGING VENTILATION

Fresh air delivered through the lower air intake is channeled along the inside of the face shield to reduce fogging.

## 3) UPPER AIR INTAKE

Extensive testing in SHOEI's in-house wind tunnels ensures the aerodynamic efficiency of all our air intakes, effectively minimizing air turbulence while maximizing air flow throughout the helmet.

## 4) REAR AIR EXHAUST VENTS

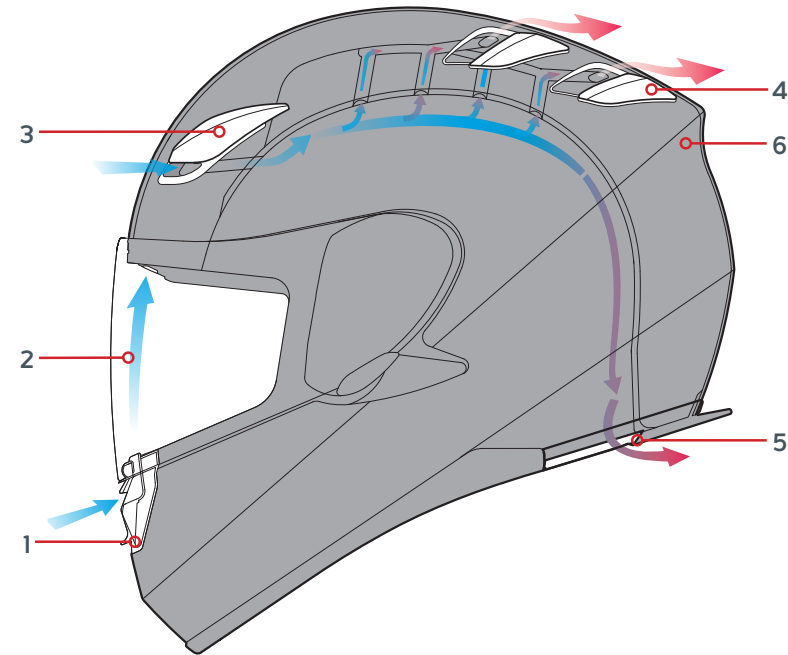
Tireless research in SHOEI's wind tunnels has revealed that the optimal location for exhaust vents is actually higher on the rear portion of the helmet's shell than once thought. The end result are exhaust vents that take better advantage of negative pressure suction, dramatically improving exhaust ventilation.

## 5) NECK OUTLET VENT

Located at the bottom rear of the helmet, neck outlet vents work in conjunction with the upper and lower air intakes to exhaust hot air and eliminate humidity.

## 6) SHELL-INTEGRATED SPOILER

SHOEI's exclusive, state-of-the-art shell forming technology incorporates the aerodynamic advantages of a spoiler right into the shell of our helmets. Maintaining a consistent shell thickness to guarantee proper strength and weight, the shell-integrated spoiler reduces lift and drag during high-speed riding, yielding a stable, less fatiguing ride.



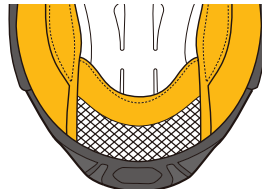
## 3D MAX-DRY INTERIOR SYSTEM

Designed exclusively for the X-TWELVE, VFX-W and Hornet-DS, the 3D Max-Dry interior is a high-performance system that features SHOEI's proprietary Max-Dry material, proven to absorb and dissipate sweat 2X faster than nylon interiors. Pulling moisture away from the skin results in a cooler, dryer riding and racing experience. In addition, our 3D Max-Dry liners are three-dimensionally shaped to match the contours of a rider's head, yielding our most comfortable fit ever.



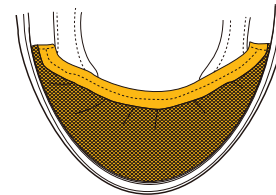
## AIM+ SHELL CONSTRUCTION

SHOEI's proprietary AIM+ technology integrates a six-ply matrix of hand-laid interwoven layers of fiberglass with organic fibers and resin, resulting in the strongest, lightest, most elastic shell we've ever produced.



## INTEGRATED NECK PAD

In addition to providing improved helmet stability capable of reducing rider fatigue, SHOEI's newly designed, integrated neck pads are effective at preventing unwanted wind and road noise from entering through the bottom of the helmet.



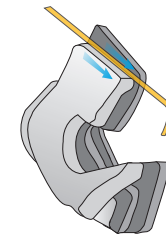
## CHIN CURTAIN

Standard on many SHOEI helmet models, the chin curtain can be inserted into the lower edge of the chin bar to reduce wind turbulence and noise.



## MULTI-LAYER CHEEK PADS

SHOEI's Multi-Layer Cheek Pads combine varying foam densities to find the perfect balance between comfort and helmet stabilization. Variable thickness cheekpads are available for custom fitting.



## CHEEK PAD EYEGGLASS CHANNELS

SHOEI riders who wear eyeglasses or sunglasses will enjoy the extra comfort yielded from these specially designed channels in our cheek pads—the most efficient method for relieving pressure created by eyeglass arms in the temple area.



## HELMET SPECS MATRIX

FEATURES	FULL-FACE			FLIP-UP/OPEN-FACE			OFF-ROAD	DUAL-SPORT
	X-TWELVE	RF-1100	QWEST	NEOTEC	MULTITEC	RJ PLATINUM-R	VFX-W	HORNET-DS
BASE PLATE SYSTEM	QRSA	QRSA	QRSA	QR-N	QRBP	NA	NA	NA
SHIELD/VISOR	CW-1	CW-1	CW-1	CNS-1	CX-1V	GT	V-430 Sleek Visor	C-49
SHIELD PRESET LEVER	S	S	S	NA	S	NA	NA	NA
SHELL CONSTRUCTION	AIM+	AIM+	AIM+	AIM	AIM	AIM+	AIM+	AIM+
UPPER AIR INTAKE	S	S	S	S	S	S	S	S
LOWER AIR INTAKE	S	S	S	S	S	NA	NA	S
FACE SHIELD DEFOGGING VENT	S	S	S	S	S	NA	NA	S
REAR AIR OUTLET	S	S	S	S	NA	S	S	S
NECK OUTLET VENT	S	S	S	NA	S	S	S	S
LINER SYSTEM	Removable 3D Max-Dry	Removable	Removable Cheek Pads	Removable	Removable Cheek Pads	Removable	Removable 3D Max-Dry	Removable 3D Max-Dry
BREATH GUARD	S	S	S	S	S	NA	NA	NA
CHIN CURTAIN	S	S	S	S	S	NA	NA	S
AVAILABLE SIZES	XS-XXL	XXS-XXXL*	XXS-XXL	XS-XXL	XXS-XXL	XS-XXXL**	XS-XXL	XS-XL
SNELL STANDARD	M2010/DOT	M2010/DOT	M2010/DOT	DOT	DOT	M2010/DOT	M2010/DOT	M2010/DOT
5-YEAR WARRANTY	S	S	S	S	S	S	S	S

\*Size XXXL is available in White, Black, Matte Black, Anthracite, and Light Silver

\*\*Size XXXL is available in White, Black, Matte Black, and Light Silver

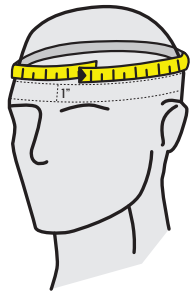
S= Standard NA= Not Available

## THE PERFECT FIT

No helmet can protect the wearer against all unforeseeable high- and low-speed impacts. However, to help maximize head protection, the helmet must fit properly, and the retention system must be securely fastened under the chin. Failure to ride with a proper fitting helmet and securely fastened chinstrap is dangerous, as the helmet could come off during an accident, resulting in severe head trauma or death.

To determine the proper helmet fit and learn how to safely secure your chinstrap retention system, we recommend viewing SHOEI's "Helmet Fit" video at [www.shoei-helmets.com/helmetfit](http://www.shoei-helmets.com/helmetfit), or consult with an authorized SHOEI dealer today. Proper fit is important not only for comfort, but for safety, as well.

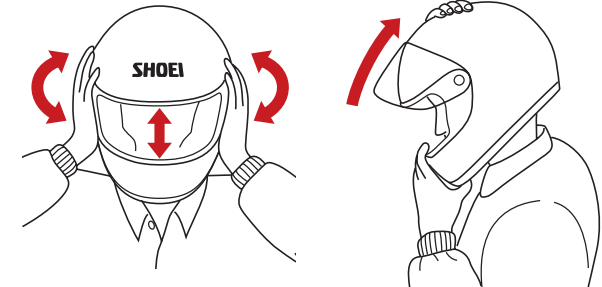
SIZING GUIDELINES	SIZE:	XX-SMALL	X-SMALL	SMALL	MEDIUM	LARGE	X-LARGE	XX-LARGE	XXX-LARGE
	HAT SIZE	6 3/8 - 6 1/2	6 5/8 - 6 3/4	6 7/8 - 7	7 1/8 - 7 1/4	7 3/8 - 7 1/2	7 5/8 - 7 3/4	7 7/8 - 8	8 1/8 - 8 1/4
	CM	51 - 52	53 - 54	55 - 56	57 - 58	59 - 60	61 - 62	63 - 64	65 - 66
	INCHES	20 1/8 - 20 1/2	20 7/8 - 21 1/4	21 5/8 - 22	22 1/2 - 22 7/8	23 1/4 - 23 5/8	24 - 24 3/8	24 3/4 - 25 1/8	25 5/8 - 26



### How To Measure Your Head Size

1. To determine where you fall on SHOEI's sizing chart (as a starting point for proper helmet fit), pass a soft, flexible tape measure horizontally around your head at a height of approximately one inch (2.5cm) above your eyebrows (the largest measurement around your forehead).

2. Select the helmet size that is closest to your head measurement from the sizing guidelines above. If your head measurement falls between two helmet sizes, first try on the smaller of the two helmets.



**SHIELDS**

SHOEI's three-dimensionally curved CW-1 shield is optically perfect and offers a distortion-free view throughout the entire field of vision. All SHOEI shields protect riders from 99% of the sun's damaging UV rays.

**CW-1 SHIELD** (X-Twelve/RF-1100/Qwest)



**CNS-1 SHIELD** (Neotec)



**C-49 SHIELD** (Hornet-DS)



**PINLOCK® FOG-RESISTANT SYSTEM**

The Pinlock® system offers the most effective anti-fog protection in existence. A simple, one-step installation process makes every Pinlock® lens easy to install.



**REPLACEMENT PARTS**

SHOEI offers a wide variety of replacement parts and accessories for all of our helmet models. To learn more, please visit our online store at [www.store.shoei-helmets.com](http://www.store.shoei-helmets.com).

**AIRFLOW DEVICES**

Enhance your riding experience with SHOEI's exclusive airflow devices. By restricting incoming airflow at the helmet bottom and rerouting the rider's breath to reduce fogging, these accessories further improve the legendary air control found in SHOEI's full-face helmets.



**CUSTOMIZE YOUR HELMET'S FIT**

SHOEI offers a full line of replaceable cheek pads and center pads in varying thicknesses for most of our street and off-road helmets. Once you've found a SHOEI helmet that fits comfortably around the crown of your head, you can easily fine-tune the overall fit by changing to one of our optional cheek pad and/or center pad sizes. Please visit our online store at [www.store.shoei-helmets.com](http://www.store.shoei-helmets.com) to view a full list of options.



**CHEEK PAD SIZES**

HELMET MODEL	SIZES
X-TWELVE/Multitec/Hornet-DS/ RJ Platinum-R	31mm-43mm
Neotec/RF-1100/Qwest	31mm-41mm
VFX-W	31mm-39mm



All SHOEI helmets are backed by a limited warranty that covers material and craftsmanship defects for five years from the date of purchase, or seven years from the date of manufacture (whichever comes first).





© 2012 SHOEI SAFETY HELMET CORP. All Rights Reserved.

**Design:** The Medium Creative Group (themediumcg.com)

**Content:** SHOEI Safety Helmet Corp.

**Photos:** Action & Lifestyle: Garth Milan/MCG, John Huber/MCG; Product: SHOEI Japan.

You can find further information and a list of dealers at: [www.shoei-helmets.com/FindDealer.aspx](http://www.shoei-helmets.com/FindDealer.aspx)  
SHOEI Helmets are exclusively distributed in the USA by Helmet House.



SHOEI SAFETY HELMET CORP.  
3002 Dow Ave., Suite 128  
Tustin, CA 92780  
T 714.730.0941 • F 714.730.0942  
[SHOEI-HELMETS.COM](http://SHOEI-HELMETS.COM)